



# Final symposium Thursday 26<sup>th</sup> September

## The Dark Age of the Lowlands in an interdisciplinary light: people, landscape and climate in the Netherlands between AD 300 and 1000

Preliminary programme Thursday 26<sup>th</sup> of September 2019

Location : Utrecht University - Boothzaal  
University library, Heidelberglaan 3

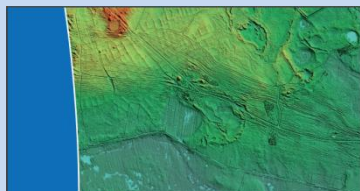
- 9.00-9.30 *Welcome & coffee*
- 9.30-9.45 *Introduction to the symposium and project*
- 9.45-10.30 *Dark Age of the Lowlands research project:*  
*Harm Jan Pierik*  
*Rowin van Lanen*  
*Marjolein Gouw-Bouman*
- 10.30-11.00 *Coffee break*
- 11.00-12.30 *Presentations (subjects and speakers to be announced)*
- 12.30-13.30 *Lunch break*
- 13.30-15.00 *Presentations (subjects and speakers to be announced)*
- 15.00-15.30 *Coffee break*
- 15.30-16.30 *Presentations (subjects and speakers to be announced)*
- 16.30-17.00 *Concluding session*
- 17.00-18.30 *Drinks*



Utrecht University



Nederlandse Organisatie voor Wetenschappelijk Onderzoek



### Changing ways

Patterns of connectivity, habitation and persistence in Northwest European lowlands during the first millennium AD

Rowin van Lanen



### Past human-landscape interactions in the Netherlands

Reconstructions from sand belt to coastal-delta plain for the first millennium AD

Harm Jan Pierik

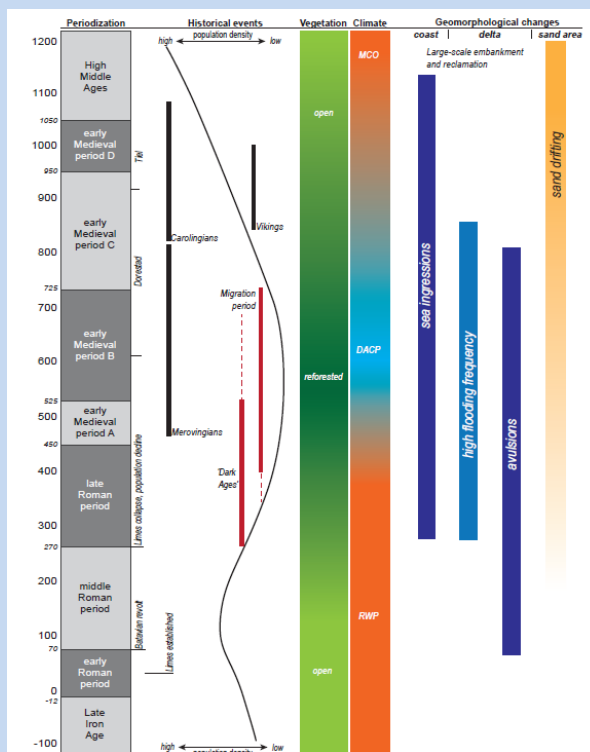


Figure 1.2 | Timeline with periodization in the first millennium AD in the Netherlands. The depopulation in the Netherlands is coeval with several geomorphological changes. Population density and vegetation openness after Louwe Kooijmans (1995); climate after Buntgen et al. (2016); red = 'warm'; blue = 'cold'; RWP = Roman Warm Period, DACP Dark Ages Cold Period, MCO Medieval Climate Optimum. Sea ingressions after Vos (2015a); flooding history after Toonen et al. (2013); avulsions after Berendsen & Stouthamer (2000); Sand drifting after Koster et al. (1993).