



KNGMG SediKring Field Excursion Hattem



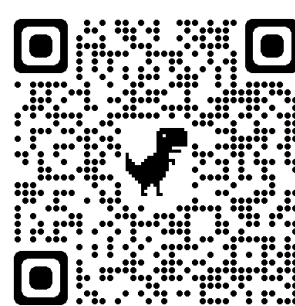
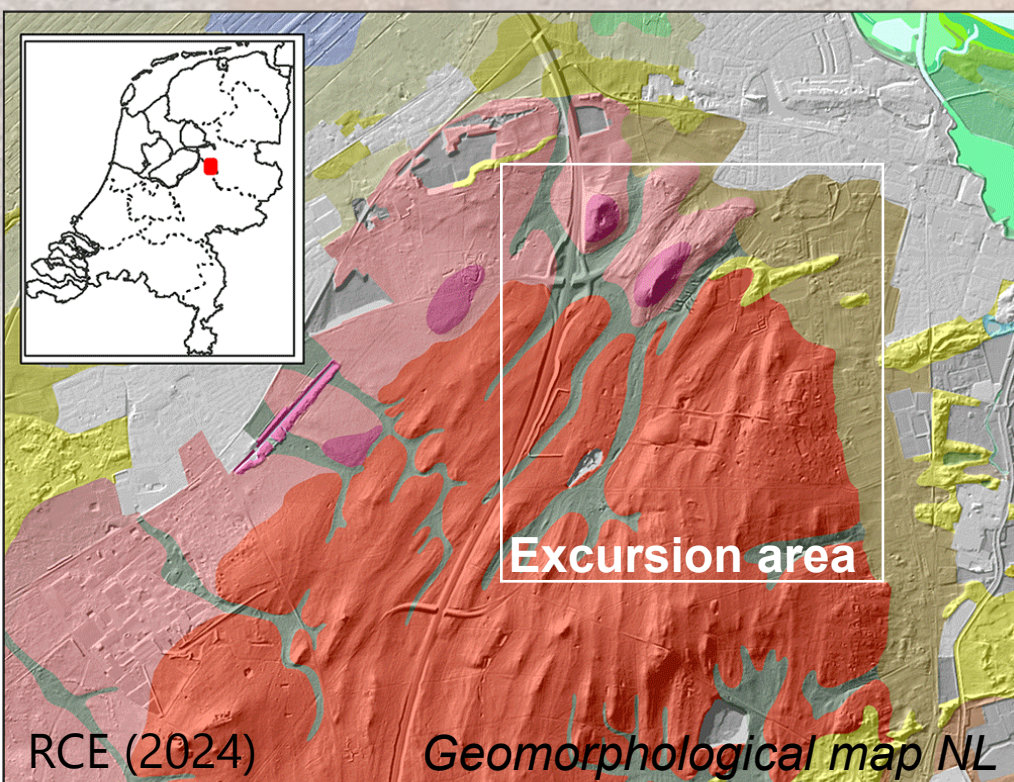
On Saturday 19th of October, the KNGMG Sedimentological Circle will organize a one-day field excursion at the northern end of the Veluwe, near the city of Hattem. We will start at 10:00 from at Restaurant "De Keuken van Caatje", Leemkuilen 6, 8051 PW Hattem.

At the restaurant we will start with a short presentation on the local geology. Under the guidance of local geological experts Frank van den Belt and Lars Noorbergen we will then visit multiple localities in the forest near Hattem. These stops include former sand and clay pits (Gemeentegroeve and Leemkule) which expose early and middle Pleistocene sediments that were deformed and brought back to the surface as part of the Veluwe ice-pushed ridge complex. These exposures give an insight into changes in depositional environments and sediment composition in the Eridanos river system during the early stages of the Pleistocene. Although the current exposures are relatively small, we will be able to compare our own observations and recent data (e.g. Noorbergen and Van den Brink, 2024) to excellent field photographs and geological notes dating back to when the pits were still actively being excavated.

We'll also pay attention to the geomorphology (e.g. meltwater deposits) and find historical traces such as the hand-dug hill side water springs and military earthworks dug by the Spanish in the 16th century.

Please register before 1st of October through the Google Form (via the QR below). Registration is free for members of the SediKring, non-members pay 10 euro (= 2024 membership!). Given the relatively small exposures are impractical for large groups, we aim for a group size of approximately 20 people. In case of oversubscription, we will prioritize current members, in order of registration date.

Note: Transport and lunch are at own cost and initiative. We will help with organizing shared rides and/or pickup at the nearest train station if required.



Registration QR

